

**: LÂMINA MENSAL**
**Características**

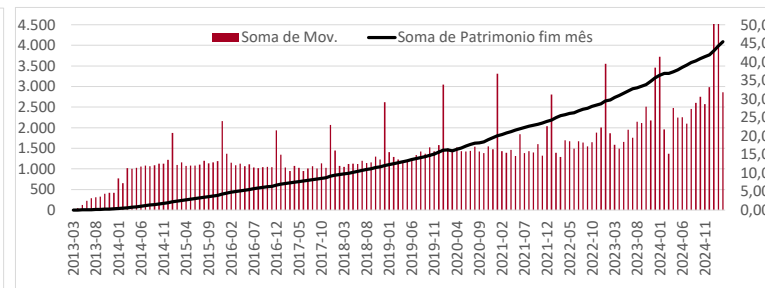
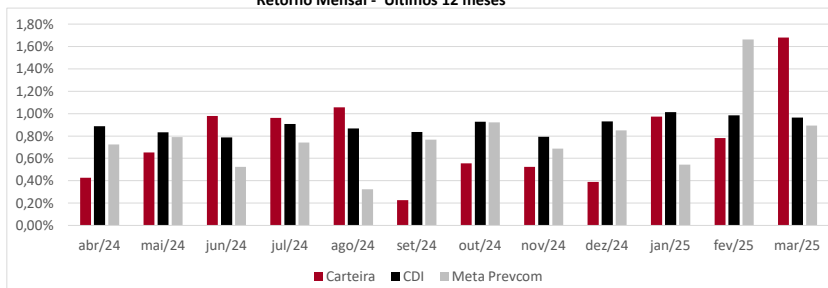
Renda Fixa CDI	49,14%
Renda Fixa Inflação	35,78%
Fundos de Participações	6,30%
Renda Variável	4,79%
Internacional Europa	1,50%
Fundo Imobiliário	1,45%
Internacional Global	0,84%
Empréstimos	0,20%



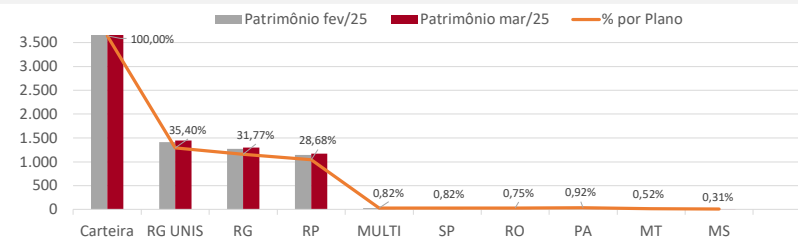
**Política de Investimentos:** Investe os recursos, principalmente, em cotas de fundos que atuam em diversos mercados, sem o compromisso de concentração em fator de risco específico.

Meta Prevcom:  
 IPCA+5% até 04/20  
 IPCA+4% até 12/24  
 IPCA+4,5% 2025

Retorno (%)	Ano	12 meses	24 meses	36 meses	Início
Carteira	3,45%	9,59%	22,58%	32,30%	253,55%
CDI	2,99%	11,28%	25,02%	41,63%	194,59%
IPCA	2,04%	5,48%	9,62%	14,72%	97,89%
Meta Prevcom	3,13%	9,84%	18,63%	29,11%	240,12%
IMA-B5	3,11%	7,25%	17,58%	29,79%	226,09%
Poupança	1,92%	7,33%	15,50%	25,08%	104,28%
IBOVESPA	8,29%	1,68%	27,85%	8,55%	122,50%
MSCI World	-9,25%	21,35%	46,93%	44,05%	642,73%
MSCI Europe	1,87%	19,68%	30,70%	38,37%	329,72%

\* Cf. MP 567/12
**Gráficos**
**Retorno Mensal - Últimos 12 meses**

**Carteira**

	Patrimônio fev/25	Patrimônio mar/25	% por Plano
<b>Carteira</b>	<b>3.986,34</b>	<b>4.085,54</b>	<b>100,00%</b>
RG UNIS	1.413,04	1.446,40	35,40%
RG	1.271,56	1.298,02	31,77%
RP	1.142,01	1.171,53	28,68%
MULTI	32,79	33,66	0,82%
SP	31,56	33,60	0,82%
RO	29,32	30,76	0,75%
PA	33,81	37,70	0,92%
MT	20,12	21,35	0,52%
MS	12,12	12,51	0,31%



## : LÂMINA MENSAL

março de 2025

Retorno Mensal (%)	mar/25	fev/25	jan/25	dez/24	nov/24	out/24	set/24	ago/24	jul/24	jun/24	mai/24	abr/24
Carteira	1,68%	0,78%	0,97%	0,39%	0,52%	0,56%	0,23%	1,06%	0,96%	0,98%	0,65%	0,43%
CDI	0,96%	0,99%	1,01%	0,93%	0,79%	0,93%	0,84%	0,87%	0,91%	0,79%	0,83%	0,89%
IPCA	0,56%	1,31%	0,16%	0,52%	0,39%	0,56%	0,44%	-0,02%	0,38%	0,21%	0,46%	0,38%
Meta Prevcom	0,89%	1,66%	0,55%	0,85%	0,69%	0,92%	0,77%	0,32%	0,74%	0,52%	0,79%	0,72%
IMA-B5	0,55%	0,65%	1,88%	-0,28%	0,36%	0,74%	0,40%	0,59%	0,91%	0,39%	1,05%	-0,20%
Poupança	0,61%	0,63%	0,67%	0,58%	0,57%	0,60%	0,57%	0,57%	0,57%	0,54%	0,59%	0,60%
IBOVESPA	6,08%	-2,64%	4,86%	-4,28%	-3,12%	-1,60%	-3,08%	6,54%	3,02%	1,48%	-3,04%	-1,70%
MSCI World	-6,38%	-0,50%	-2,58%	-0,45%	9,45%	3,90%	-2,06%	2,40%	3,59%	8,10%	5,64%	-0,45%
MSCI Europe	-2,47%	3,86%	0,58%	-0,25%	2,83%	-0,27%	-3,38%	3,61%	3,98%	3,53%	5,51%	1,01%

### Composição da Carteira

Retorno Nominal em % | Retorno Relativo ao índice de referência

Performance dos Fundos em Carteira			Mês		Ano		12 meses		Início do investimento		Patrimônio		
Nome	Índice ref.	% PL	Início	Nominal	Relativo	Nominal	Relativo	Nominal	Relativo	Nominal	Relativo	Volatilidade	R\$ milhões
Bela Cintra FI RF	Meta Prevcom	30,30%	13/nov/13	1,33%	0,43%	3,31%	0,17%	10,23%	0,39%	258,51%	38,84%	0,51%	R\$ 1.237,89
Itaú Inst Global Dinâmico RF	CDI	7,16%	20/fev/20	0,70%	72,39%	2,68%	89,55%	11,55%	102,42%	57,19%	104,48%	0,54%	R\$ 292,55
Itaú Institucional Optimus RF LP FICFI	CDI	6,09%	29/abr/22	0,57%	59,53%	2,17%	72,52%	12,38%	109,79%	40,73%	100,67%	0,83%	R\$ 248,85
Itaú Institucional RF Referenciado DI	CDI	4,81%	15/fev/24	0,97%	100,43%	3,05%	101,85%	11,45%	101,54%	12,98%	102,40%	0,07%	R\$ 196,32
Itaú Inst BOV11 FIC FIA	Ibovespa	3,81%	04/ago/23	6,02%	-0,05%	8,55%	0,26%	2,53%	0,85%	10,20%	1,20%	14,24%	R\$ 155,68
Itaú Inst RF Inflação 5 FICFI	IMA-B5	3,48%	19/jun/19	0,53%	-0,01%	3,06%	-0,05%	7,06%	-0,19%	59,94%	-1,75%	2,28%	R\$ 142,20
BTGP Economia Real FIP Multi	IPCA+6,5%	3,43%	19/out/20	13,02%	11,98%	12,63%	9,02%	10,84%	-1,52%	134,78%	58,05%		R\$ 140,23
Itaú Institucionais Legend RF LP Fc	CDI	3,35%	02/out/19	0,80%	82,79%	2,98%	99,69%	13,83%	122,60%	67,83%	117,88%	1,58%	R\$ 136,72
Santander RF Ref DI Tit Público Hiper	CDI	3,18%	21/nov/24	0,95%	98,84%	3,03%	101,13%		4,19%	99,45%	0,08%	R\$ 130,04	
BNP Paribas Cred Inst FICFI RF CP LP	CDI	3,11%	11/out/23	1,01%	104,77%	3,17%	105,96%	11,79%	104,53%	18,14%	106,76%	0,09%	R\$ 127,09
Bradesco RF Referenciado DI Federal E	CDI	2,85%	12/ago/24	0,93%	96,46%	2,94%	98,42%		7,03%	97,43%	0,07%	R\$ 116,31	
BB RF Referenciado DI Tit Pub	CDI	2,40%	20/fev/25	0,95%	98,76%				1,25%	98,98%	0,07%	R\$ 98,14	
Sul America Cred Institucional ESG FI R	CDI	2,37%	21/jun/23	1,13%	116,98%	3,40%	113,51%	12,74%	113,01%	26,55%	122,70%	0,28%	R\$ 96,63
XP Corporate Light FI RF CP LP	CDI	2,10%	24/jan/23	1,03%	106,54%	3,16%	105,59%	11,80%	104,61%	29,89%	106,86%	0,26%	R\$ 85,68
Porto Seguro RF DI CP	CDI	1,93%	18/jul/24	1,02%	105,40%	3,15%	105,33%		8,17%	102,92%	0,12%	R\$ 78,88	
Sul América Excellence FI RF CP	CDI	1,57%	24/jan/23	1,00%	103,90%	3,14%	105,01%	12,07%	107,00%	30,70%	109,75%	0,15%	R\$ 64,05
Itaú Soberano RF Simples LP FICFI	CDI	1,52%	02/set/19	0,95%	98,42%	2,98%	99,76%	11,18%	99,15%	57,34%	98,36%	0,07%	R\$ 61,91
MAG Renda Fixa FI	CDI	1,50%	13/set/23	0,97%	100,67%	3,19%	106,52%	11,16%	99,00%	18,40%	101,63%	0,25%	R\$ 61,20
Vot Allianzgi Euro Eq Growth FIM IE	MSCI Europe	1,50%	22/mar/19	-7,25%	-4,77%	-6,44%	-8,31%	3,29%	-16,39%	88,80%	-4,58%	18,13%	R\$ 61,10
Bradesco Inst FIC FI RF IMA-B5	IMA-B5	1,47%	16/ago/23	0,52%	-0,03%	3,02%	-0,09%	6,90%	-0,35%	12,06%	-0,59%	2,31%	R\$ 60,20
BTG Pactual Créd Corp I FIQFI RF CP	CDI	1,32%	30/ago/21	1,11%	114,67%	3,45%	115,25%	12,37%	109,67%	55,43%	114,40%	0,22%	R\$ 53,92
LFT	CDI	1,26%	05/dez/23	0,75%	78,29%	2,21%	73,85%	9,59%	85,07%	13,43%	89,18%		R\$ 51,34
Inter Corporate RF Crédito Privado	CDI	1,10%	15/mar/24	0,96%	99,88%	3,02%	101,07%		10,00%	101,44%	0,08%	R\$ 44,83	
BTG Pactual Inv de Impacto FIP Mult	IPCA+6,5%	1,08%	30/ago/21	21,78%	20,74%	20,96%	17,35%	12,26%	-0,10%	47,85%	-6,57%	21,38%	R\$ 43,95
BTG Pactual Explorer Inst FI RF LP	CDI	0,94%	13/mar/24	1,16%	120,51%	3,22%	107,52%	9,07%	80,43%	9,30%	78,95%	1,22%	R\$ 38,34
Schroder Sustent Ações Globais IS IE	MSCI World	0,84%	24/mar/24	-7,66%	-1,28%	-12,30%	-3,05%		7,29%		-9,56%	17,28%	R\$ 34,32
AZ Quest Small Mid Caps Inst. FICFIA	SMLL	0,66%	09/jun/20	2,42%	-4,32%	1,85%	-7,03%	-1,14%	13,76%	15,09%	31,96%	10,14%	R\$ 27,13
Tívio Banks RF Crédito Privado FI	CDI	0,61%	10/nov/23	0,96%	99,47%	2,99%	99,83%	11,55%	102,46%	16,46%	103,52%	0,06%	R\$ 24,82
Santander RF IMA-B5 Premium FICFI	IMA-B5	0,53%	18/dez/23	0,54%	-0,01%	3,06%	-0,05%	7,01%	-0,24%	9,69%	-0,33%	2,29%	R\$ 21,59
BTG Pactual Economia Real II FIPM CLU	IPCA+8%	0,52%	04/mar/23	20,53%	19,38%	18,37%	14,41%	27,18%	13,23%	-1,27%	-27,35%		R\$ 21,06
Pátria Private Equity Fund VII Feeder I	IPCA+7%	0,47%	28/set/23	2,00%	0,93%	1,83%	-1,90%	15,98%	3,09%	17,33%	-2,30%		R\$ 19,28
Spectra VI Institucional FIP Multiestrat	IPCA+8%	0,43%	31/mar/23	-4,27%	-0,89%	-4,85%	-4,85%	-7,83%	-21,78%	41,13%	13,43%		R\$ 17,38
VBI Prime Properties FII	IFIX	0,40%	20/dez/23	2,67%	-3,46%	5,06%	-1,25%	-15,77%	-12,98%	-13,84%	-16,97%		R\$ 16,14
Rio Bravo Renda Varejo FII	IFIX	0,39%	20/dez/23	7,52%	1,38%	-3,54%	-9,85%	-17,50%	-14,72%	-14,63%	-17,76%		R\$ 15,84
Fator Verita Multiestratégia Imobiliária	IFIX	0,36%	22/jul/24	7,47%	1,33%	7,23%	0,91%			-26,92%	-24,62%		R\$ 14,54
Vinci Selection Equities FIA	Ibovespa	0,32%	30/nov/22	4,17%	-1,90%	6,02%	-2,28%	-4,23%	-5,91%	6,21%	-9,59%	13,65%	R\$ 12,87
Capitânia Reit Inst Fc FIM CP	IFIX	0,32%	25/jun/19	0,88%	-5,26%	0,34%	-5,98%	1,20%	3,99%	55,01%	27,49%	3,89%	R\$ 12,87
Perfin Voyager FIP Infra	IPCA+6%	0,25%	13/jun/24	-0,39%	-1,39%	17,66%	14,17%		83,87%	74,40%	30,43%		R\$ 10,08
Carteira de Empréstimos	CDI	0,20%	05/dez/23	0,75%	78,29%	2,21%	73,85%	9,59%	85,07%	13,43%	89,18%		R\$ 8,14
Vinci Partners IV Feeder	IPCA+6%	0,10%	25/abr/24	-1,44%	-2,44%	4,39%	0,90%			-4,81%	-15,79%		R\$ 4,15
BTG Pactual Infraestrutura III FIP Multi	IPCA+8%	0,03%	02/jul/24	-4,93%	-6,08%	10,30%	6,34%			-30,89%	-41,40%		R\$ 1,25
											<b>Patrimônio Total:</b>	<b>R\$ 4.085,54</b>	